



Extraction and Collection Elements FLEXTRACTOR

Extraction. Filtration. Persistence.



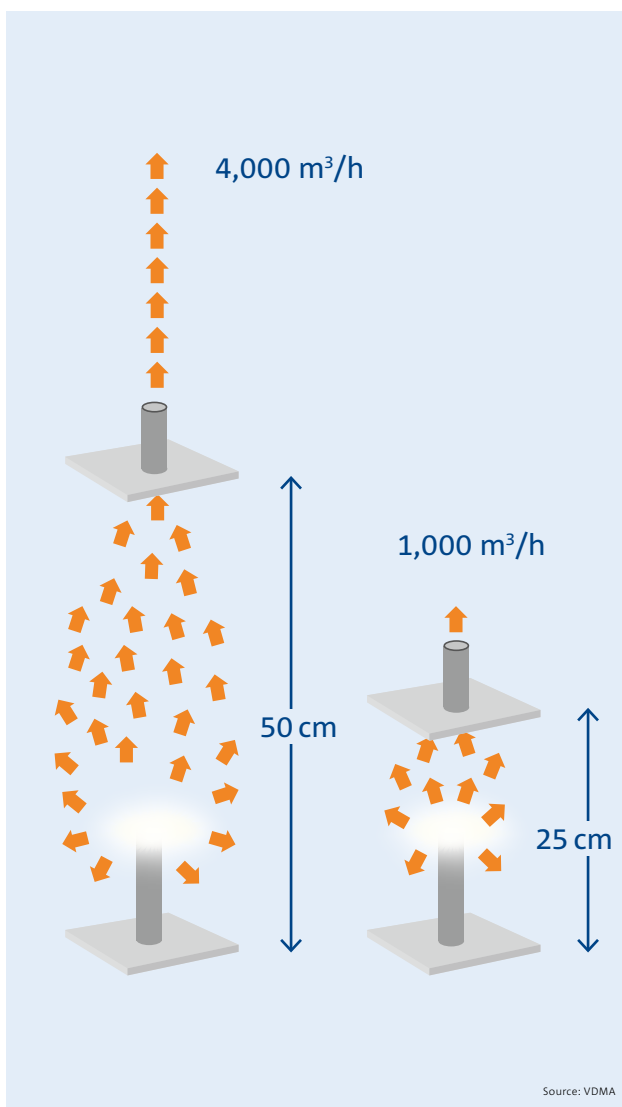


First of all collect completely, then filter perfectly.

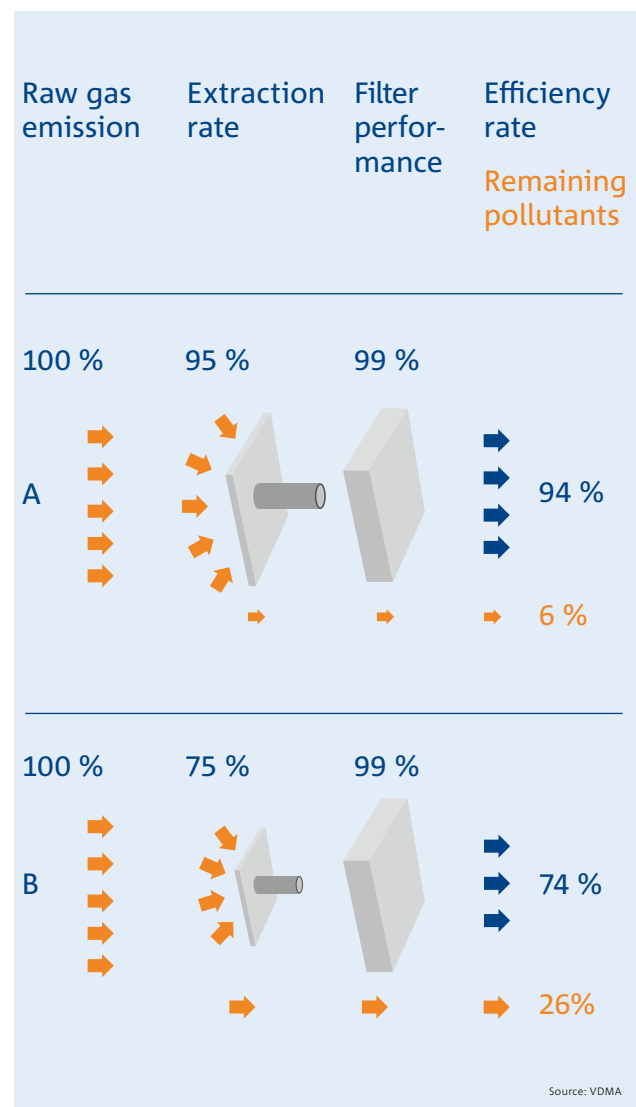
Quality of pollutant collection is the linchpin of extraction and filtration technology. In particular, closest proximity to the source of pollution is of critical importance. Doubling the distance for example, means a fourfold increase in required suction capacity and an exponential increase in energy consumption, in order to collect the corresponding amount of particles. Therefore, extraction and collection elements are required, which adapt flexibly to the conditions of real workplaces

and are easily installed. What's more, they must be suitable for efficient extraction of all kinds and amounts of pollutants. This means that system solutions must provide numerous options for individual adaptation.

In this sense, FLEXTRACTOR extraction and capturing elements provide ideal interfaces between any pollutant source and ULT's extraordinary filtration technology.



Impact of the distance of the collecting element on the required air capacity



Impact of capture efficiency on effectiveness

Versatile and flexible system

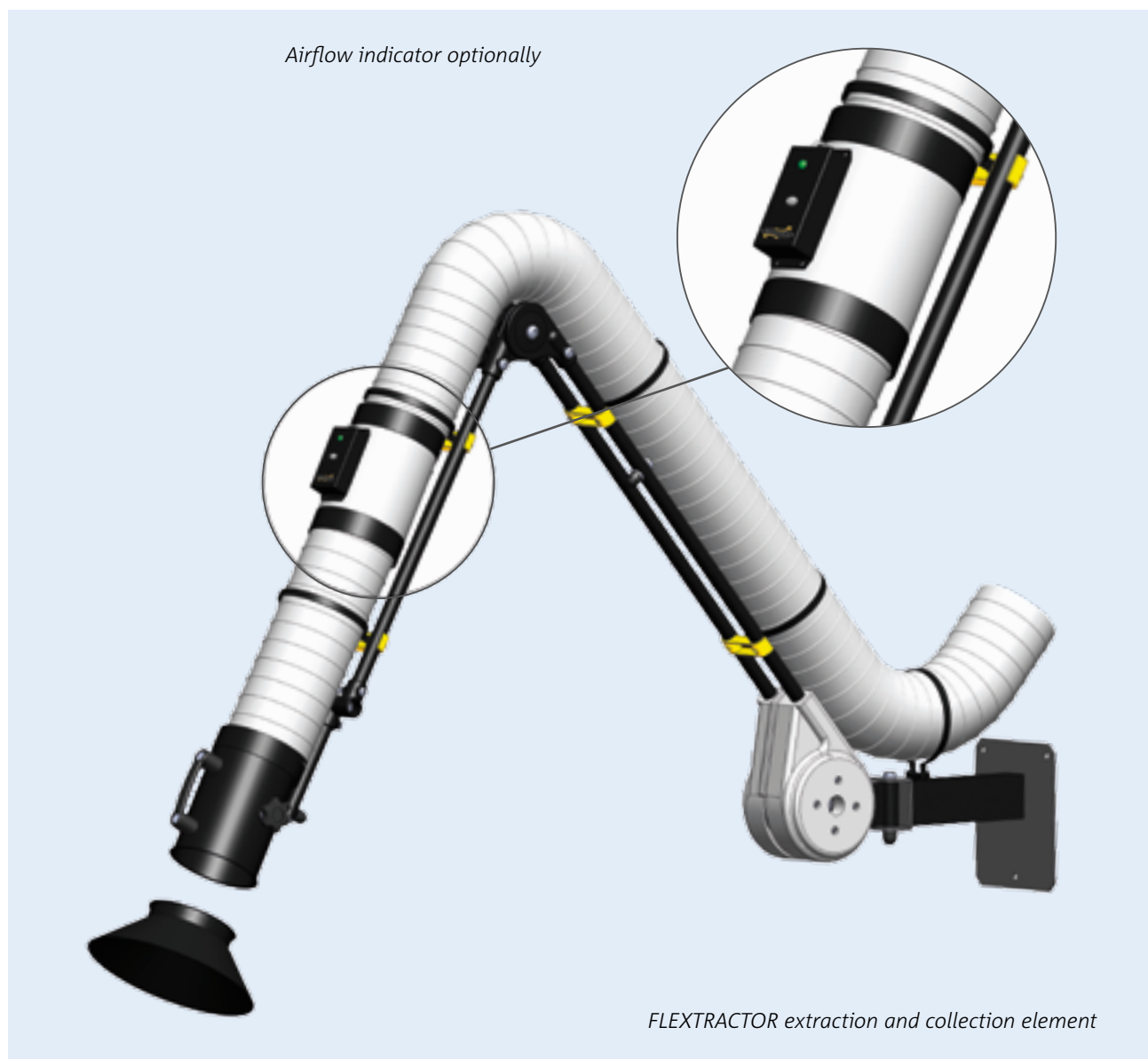
The FLEXTRACTOR system consists of various collection elements, hoses and mounting brackets:

- » Hose fixing via reusable cable ties for easy cleaning and re-installation
- » Both rugged and flexible
- » Single or twin spring for a larger reach capacity
- » Swivel joint for angles of rotation up to 270 degrees

- » Load-bearing elements are supported outside of the hose – no internal wear, no corrosion, no solids build up.

Option: airflow indicator

An electronic flow monitoring is available for all non-ATEX extraction and collection elements. The attachment to already existing systems is easily done.



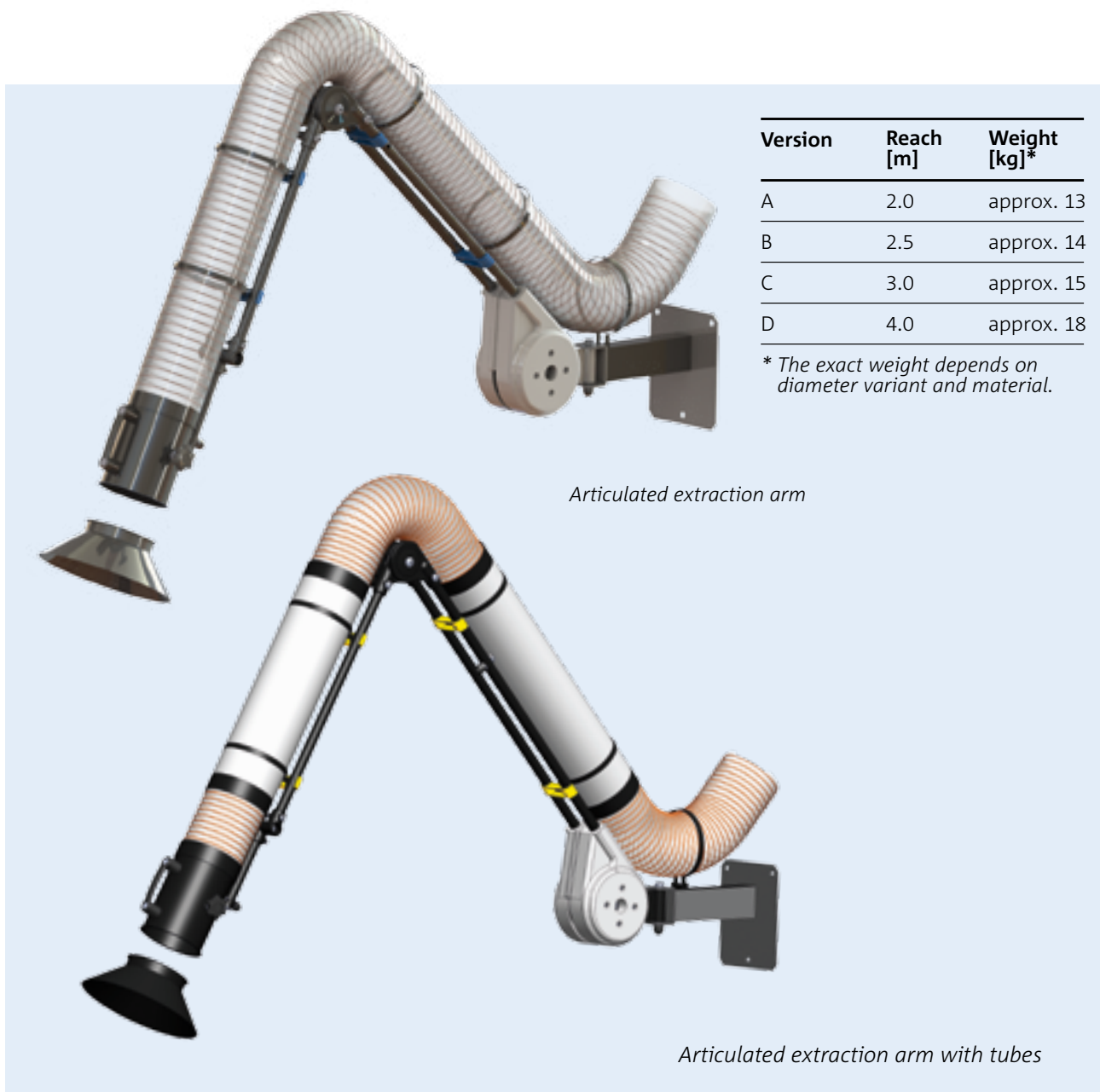
Articulated extraction arms

Articulated extraction arms perfectly adapt to various work places and working conditions:

- » Five standard diameters available (75 / 100 / 125 / 160 / 200 mm)
- » System is supplied fully assembled
- » Large selection of mounting brackets and collection elements.

Surface finish

- » Powder coated paint (black)
- » ATEX (conductive)
- » Stainless steel

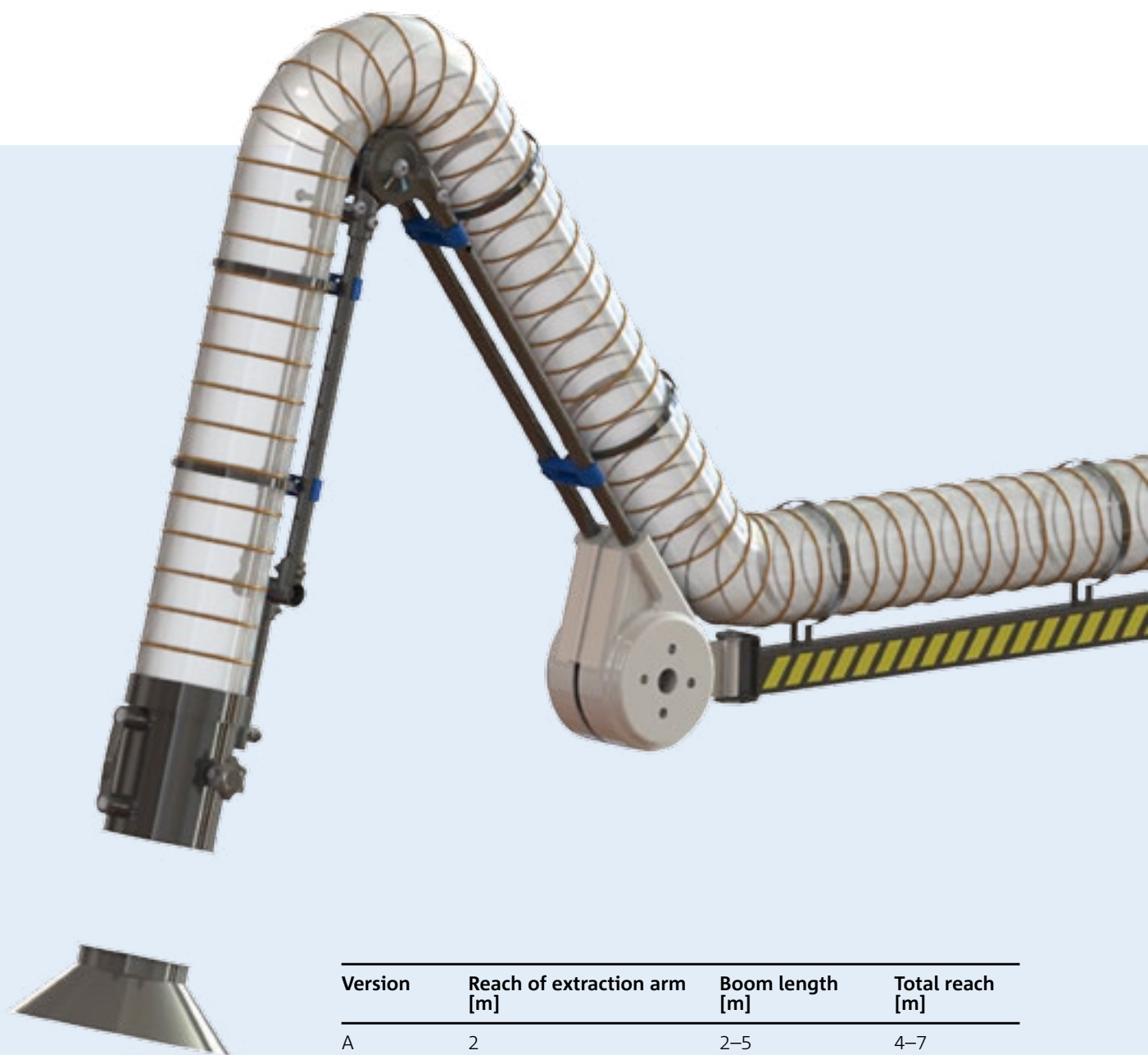


Extended extraction arms

Extended extraction arms feature the same design philosophy as the articulated extraction arms, but with the addition of extended reach. Mounting brackets and collection elements can be selected on pages 9 and 10.

Surface finish

- » Powder coated paint (black)
- » ATEX (conductive)
- » Stainless steel



Version	Reach of extraction arm [m]	Boom length [m]	Total reach [m]
A	2	2–5	4–7
B	3	1–5	4–8

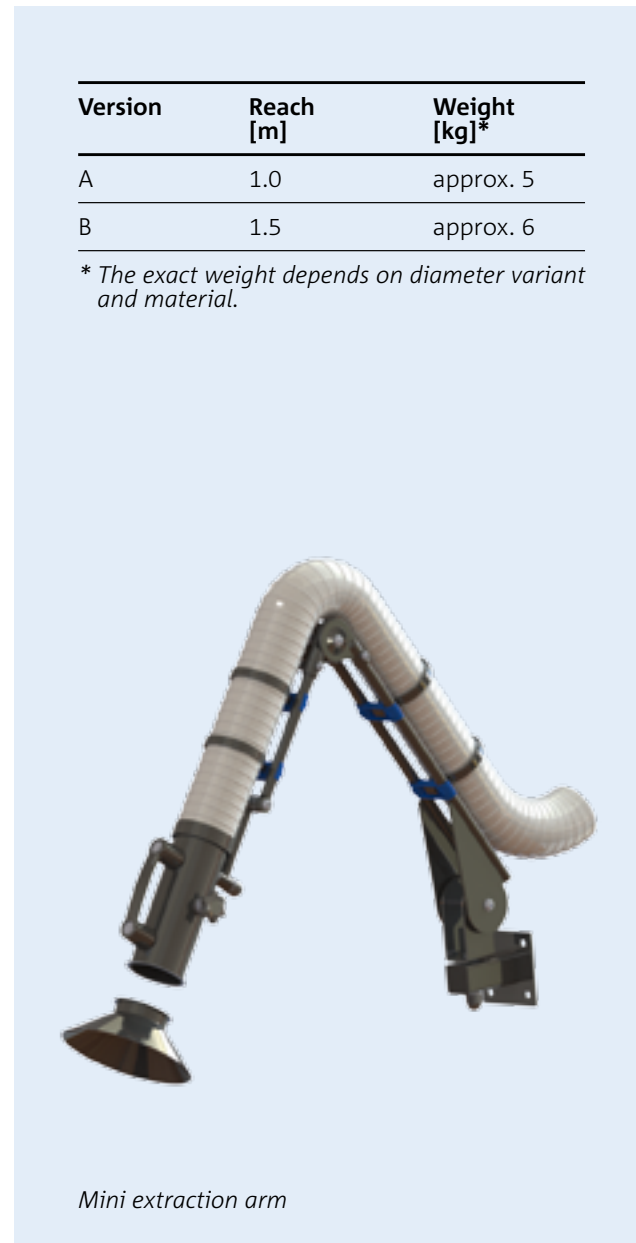
Mini extraction arms

Mini extraction arms feature the same design philosophy as the articulated extraction arms:

- » Three standard diameters available (75 / 100 / 125 mm)
- » Available in either 1 m or 1.5 m
- » Wall or bench mounting bracket included
- » System is supplied fully assembled
- » Large selection of mounting brackets and collection elements

Surface finish

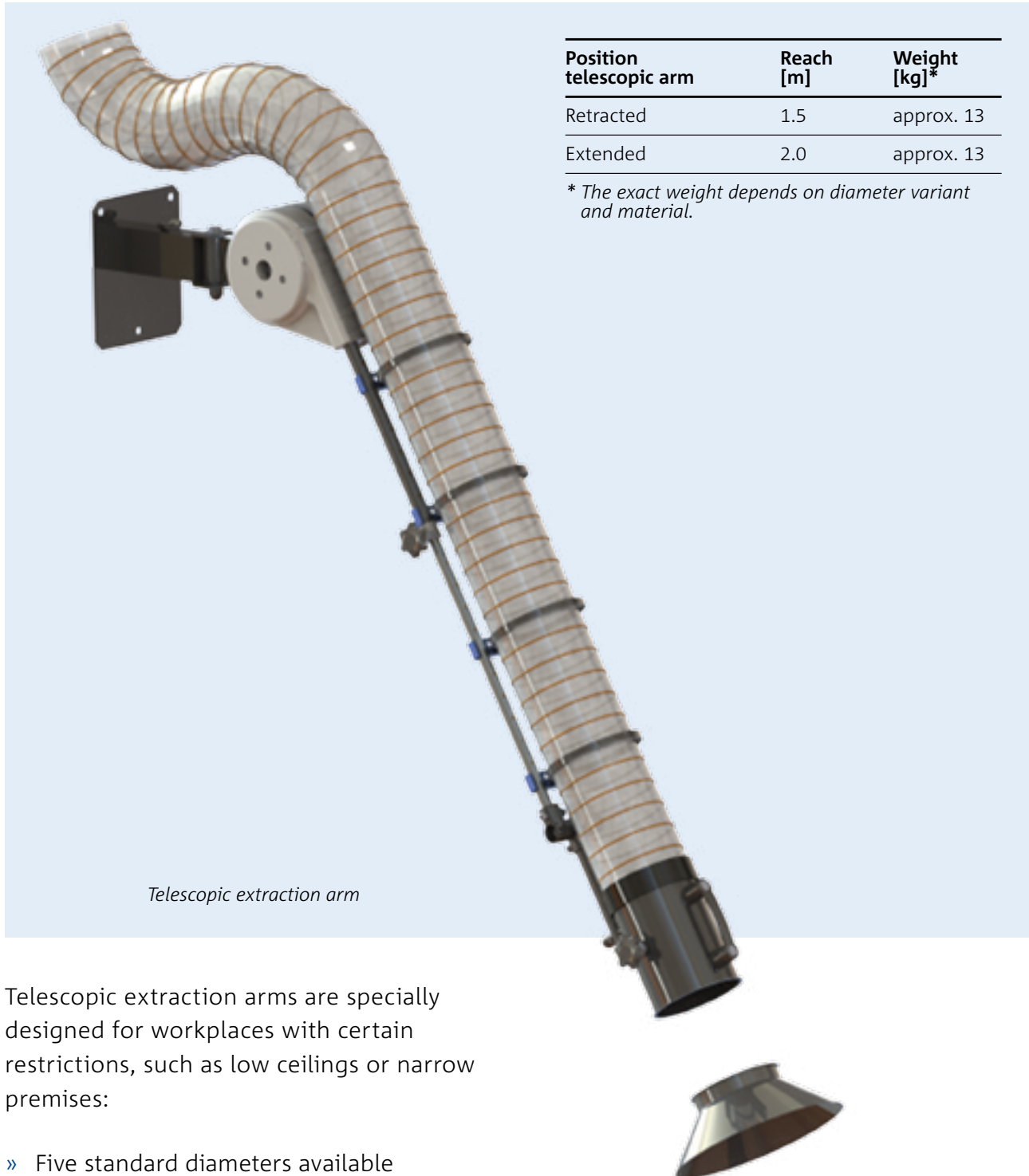
- » Powder coated paint (black)
- » ATEX (conductive)
- » Stainless steel



Version	Reach [m]	Weight [kg] [*]
A	1.0	approx. 5
B	1.5	approx. 6

^{*} The exact weight depends on diameter variant and material.

Telescopic extraction arms



Position telescopic arm	Reach [m]	Weight [kg]*
Retracted	1.5	approx. 13
Extended	2.0	approx. 13

* The exact weight depends on diameter variant and material.

Telescopic extraction arm

Telescopic extraction arms are specially designed for workplaces with certain restrictions, such as low ceilings or narrow premises:

- » Five standard diameters available (75 / 100 / 125 / 160 / 200 mm)
- » Standard wall mounting brackets included
- » System is supplied completely assembled
- » Large selection of mounting brackets and collection elements

Surface finish

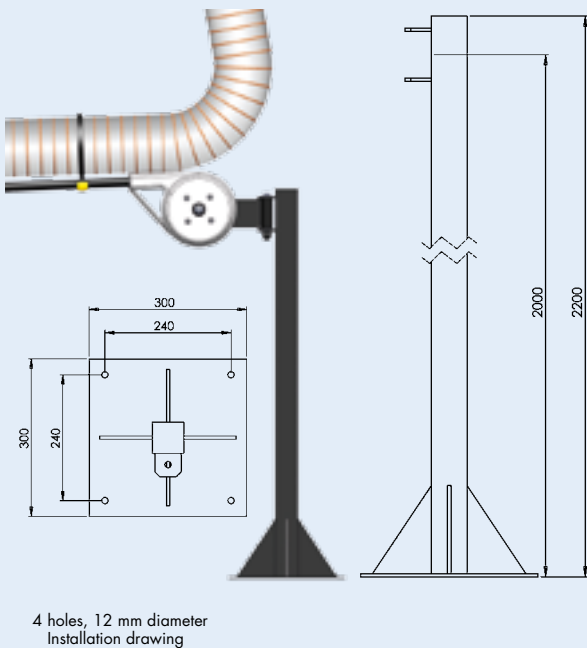
- » Powder coated paint (black)
- » ATEX (conductive)
- » Stainless steel

Mounting brackets

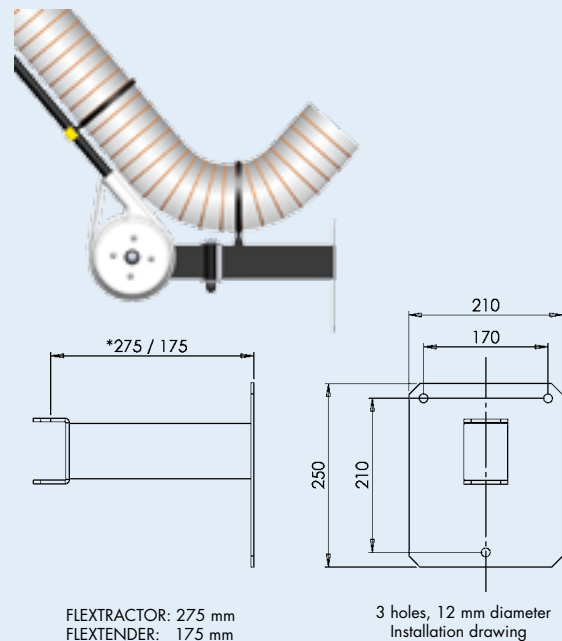
For easy positioning and fixation of collection elements and hoses at the workplace, you can select from various brackets. They are

all characterised by easy handling and installation. In addition, ULT offers custom designed brackets.

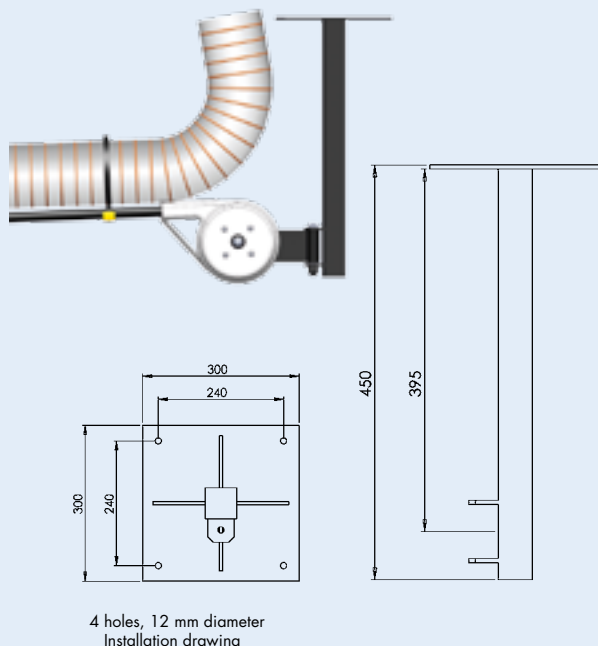
Floor stanchion



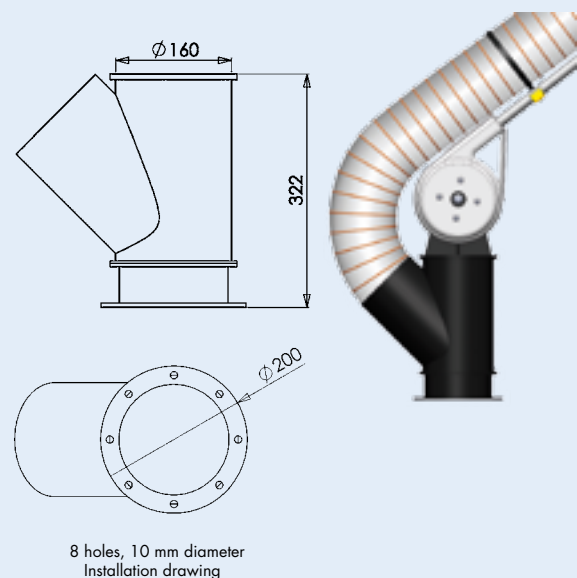
Standard wall mounting



Ceiling bracket



Up and down swivel

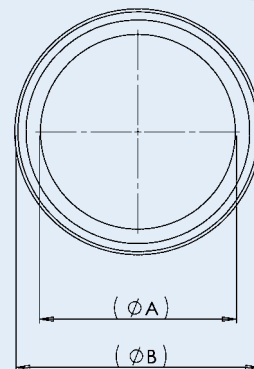


Collection elements

Depending on workplace and extraction situation, you can choose among various shapes and sizes of collection elements. The following figures illustrate the most important standard versions. In addition, ULT designs customer specific versions, up to complete housing of the pollutant source. The following material and surface options are available:

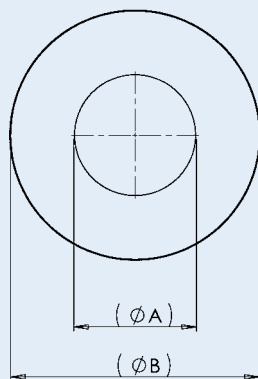
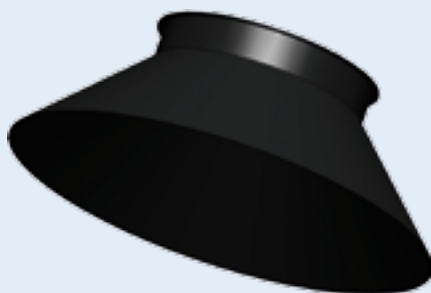
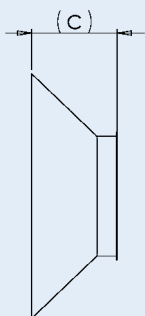
- » Powder coated paint (black)
- » ATEX (conductive)
- » Stainless steel
- » Plastics (polypropylene)

Suction tube



	A	B
75	74	109
100	99	134
125	122	157
160	158	195
200	197	232

Flared



	A	B	C
75	74	150	35
100	99	200	45
125	122	250	60
160	158	320	70
200	197	350	70

Flat hood



Curved flat hood



Suction gap



Ring hood



Hoses

ULT offers a comprehensive range of quality hoses suitable for various application conditions, normally available from stock. Our hoses comply with currently applicable standards.

In addition to our standard products, we offer optimally matched product solutions as well as individual system solutions tailored to each customer's unique requirements.

Here you find a selection from our comprehensive assortment. For additional information, please contact our sales team.

PVC 371
Extremely lightweight



- » Highly flexible
- » Capable of electro-static discharge
- » Flame-retardant

PU 301 L
Abrasion proof



- » PVC free
- » Highly flexible
- » Capable of electro-static discharge

PE 322 EL
ATEX



- » Electrically conductive in accordance with ATEX
- » PVC free
- » Highly flexible
- » Permanently anti-static

VA 471
Temperature-resistant



- » Highly flexible
- » Flame-retardant due to PTFE design

PU 330 MHF/AS
ATEX, food quality



- » Electrically conductive in accordance with ATEX
- » Design combines Ether-PUR (microbe and hydrosol resistant) and Pre-PUR (highly wear-resistant and highly flexible)
- » PVC free
- » Approved for food
- » Permanently anti-static

ULT AG

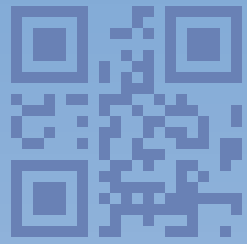
Am Göpelteich 1, D-02708 Löbau, Germany

Phone: +49 (0) 3585 4128 0

Fax: +49 (0) 3585 4128 11

Hotline: +49 (0) 800 8582400

E-Mail: ult@ult.de



www.ult.de/en

ULT is certified according to ISO 9001:2008. The plants are designed according to international standards. If required, they will be certified in accordance with ATEX and W3 and tested to meet H requirements.

In addition, the plants always comply with current EC regulations on energy efficiency (ErP directive: Total energy efficiency of ready-to-use ventilation systems or minimum energy efficiency of electric motors).

Detailed technical information can be found on device specific data sheets or on our website. All technical data is general and not binding and does not guarantee the suitability of a product for a specific application.

ULT_AES_09/2016 EN



Made in Germany

www.ult.de